

ASO PORTUARIA

Association of Port facilities of Barranquilla - Colombia



Colombia *in the world*



ASOPORTUARIA

Barranquilla *in Colombia*



ASOPORTUARIA

Dock Facility Zone Navigable Canal



BARRANQUILLA

SP. Bocas de
SP. del Caribe
Ceniza
SP. Mallorquín S.A
Ltda

SP. La Inmaculada
SP. Terminal Las Flores

SP. Pescamar

Muelles Aquamar
Monómeros # 1

Monómeros #3

Argos

Monómeros # 2

SP. Steckerl

Vopak

Quintal

SP. Michellmar
Siduport

SP. Rivert Port

SP. del Norte

SP. La Loma

SP. Frigogan

SP. Atlantic Coal

Palermo SP

SP. Regional Barranquilla

SP. Portmagdalena S.A.

Pimsa S.A. Km 38

Image © 2011 TerraMetrics

Data SIO, NOAA, U.S. Navy, NGA, GEBCO
Image © 2011 GeoEye

©2010 Google

Our brand architecture



BARRANQUILLA
ZONAPORTUARIA

ASOPORTUARIA





Who we are

The ASSOCIATION OF PORT FACILITIES OF BARRANQUILLA was founded in June, 1994. The initiative to make an association for port facilities comes up from Colombia's economical perspectives where the main interest is the increase of the international trade, the expansion, restructuration of all their ports, the building of new duty-free zones and the construction of double carriageway roads through which the cargo is transported in and out of the country improving the living conditions of their people.

The object of *the Port Facilities Zone in Barranquilla* is to offer easy terms for foreign trade and to expand the navigation over the most extensive river of Colombia: The Magdalena River. One of our challenges is to promote and support the institutions and activities that must guarantee the depths of the Access Canal, by becoming an association united in favor of common objectives which ensure the good image of our port before the local, national and international communities.



ASOPORTUARIA



ASO **PORTUARIA** *today*

Nowadays we are in a period of expansion, managing to connect more port facilities and companies with common activities, supporting our goals through agreements with public and private sector companies. We have improved our positioning in the regional and national levels thanks to our unity of criteria and professionalism, equally supporting the creation of a master plan for the Port and the creation of a single port authority.



BARRANQUILLA
ZONA **PORTUARIA**

Current *Partners*



- ARGOS S.A.
- MICHELLMAR S.A.
- PALERMO SOCIEDAD PORTUARIA S.A.
- PUERTO PIMSA S.A.
- SIDUPORT S.A.
- SOCIEDAD PORTUARIA ATLANTIC COAL S.A.
- SOCIEDAD PORTUARIA DEL CARIBE S.A.
- SOCIEDAD PORTUARIA DEL NORTE S.A.
- SOCIEDAD PORTUARIA LA LOMA (Pizano S.A.)
- SOCIEDAD PORTUARIA MONOMEROS S.A.
- SOCIEDAD PORTUARIA PORTMAGDALENA S.A.
- SODINTEC S.A
- SOCIEDAD PORTUARIA TERMINAL DE MALLORQUIN S.A.
- VOPAK DE COLOMBIA S.A.
- MUELLES AQUAMAR
- SOCIEDAD PORTUARIA BOCAS DE CENIZA

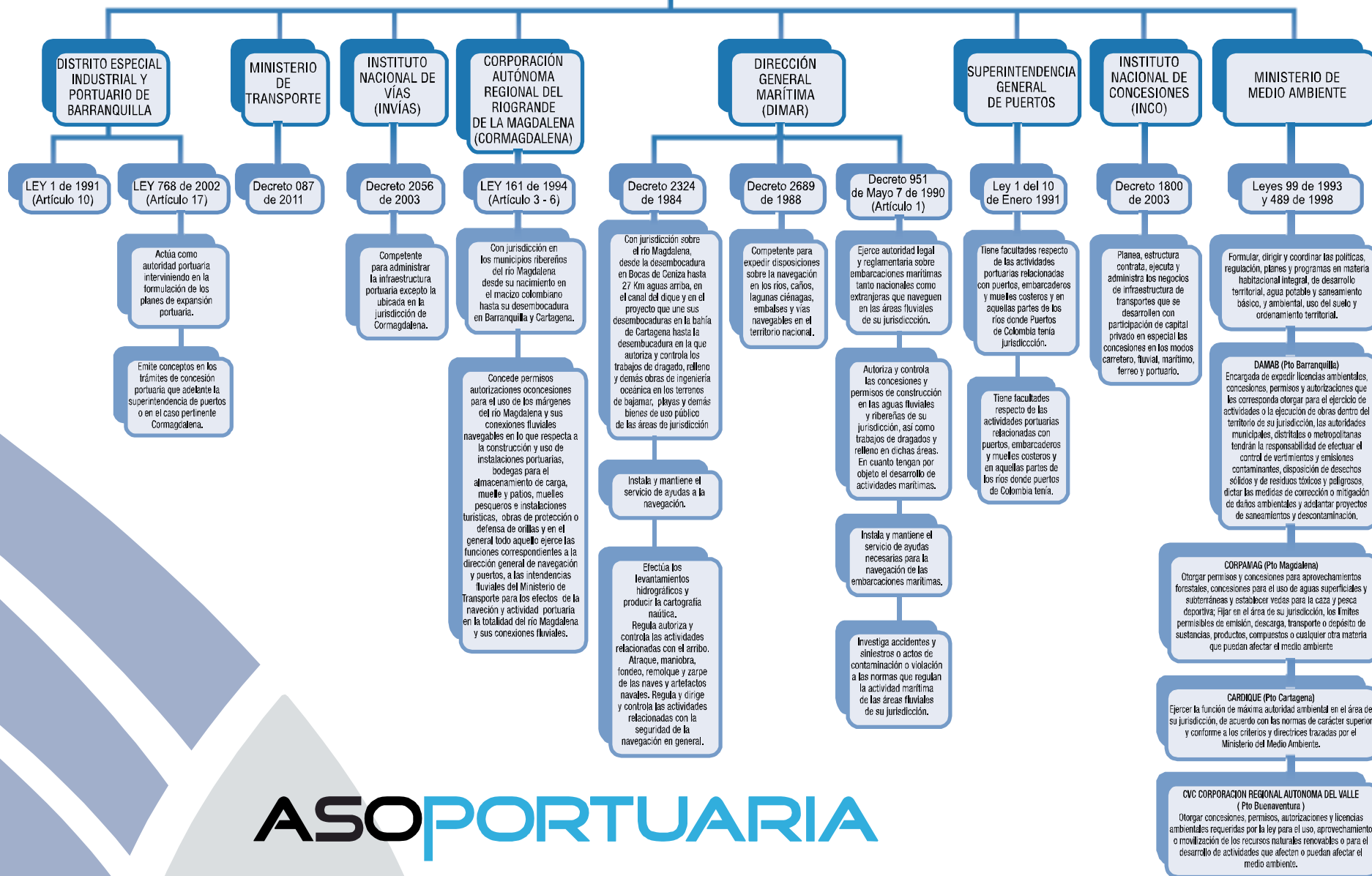


ASOPORTUARIA

Port facilities *authorities*



ENTIDADES CON COMPETENCIA EN LA ZONA PORTUARIA



ASOPORTUARIA

Port Facilities *mobilization*

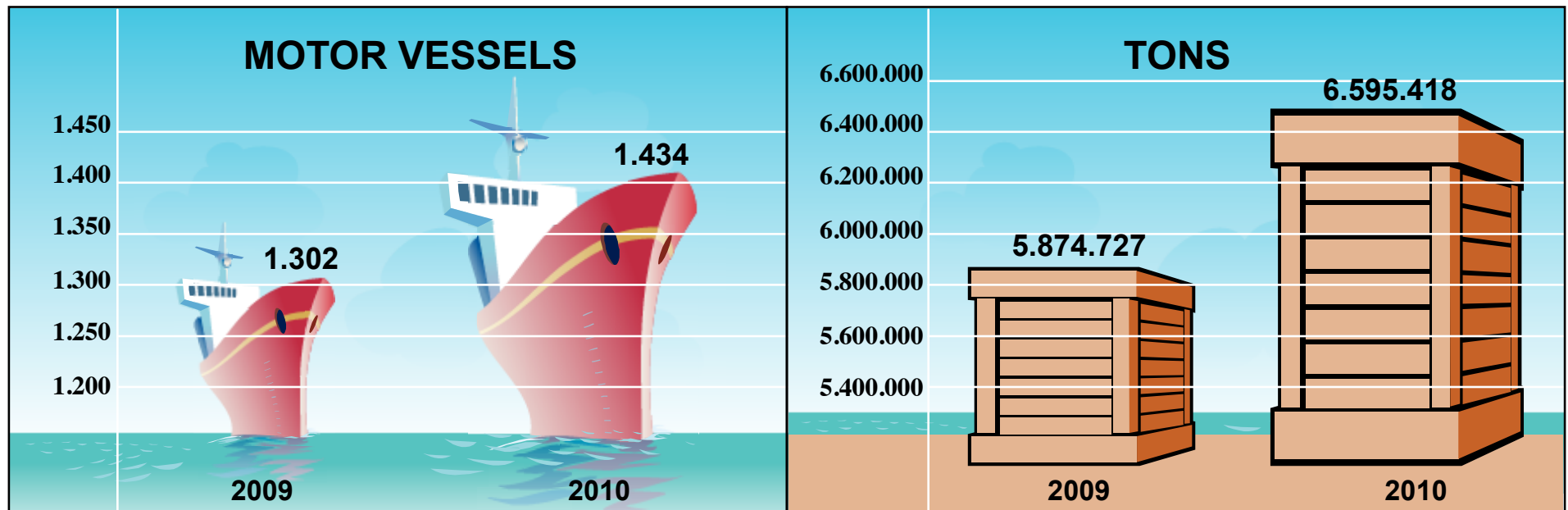


Traffic in the Port Zone

year 2010



During the course of 2010 a total of 1.434 vessels and 6.595.418 tons were mobilized through the port of Barranquilla generating an increase of 12.3% compared to the cargo of the previous year.

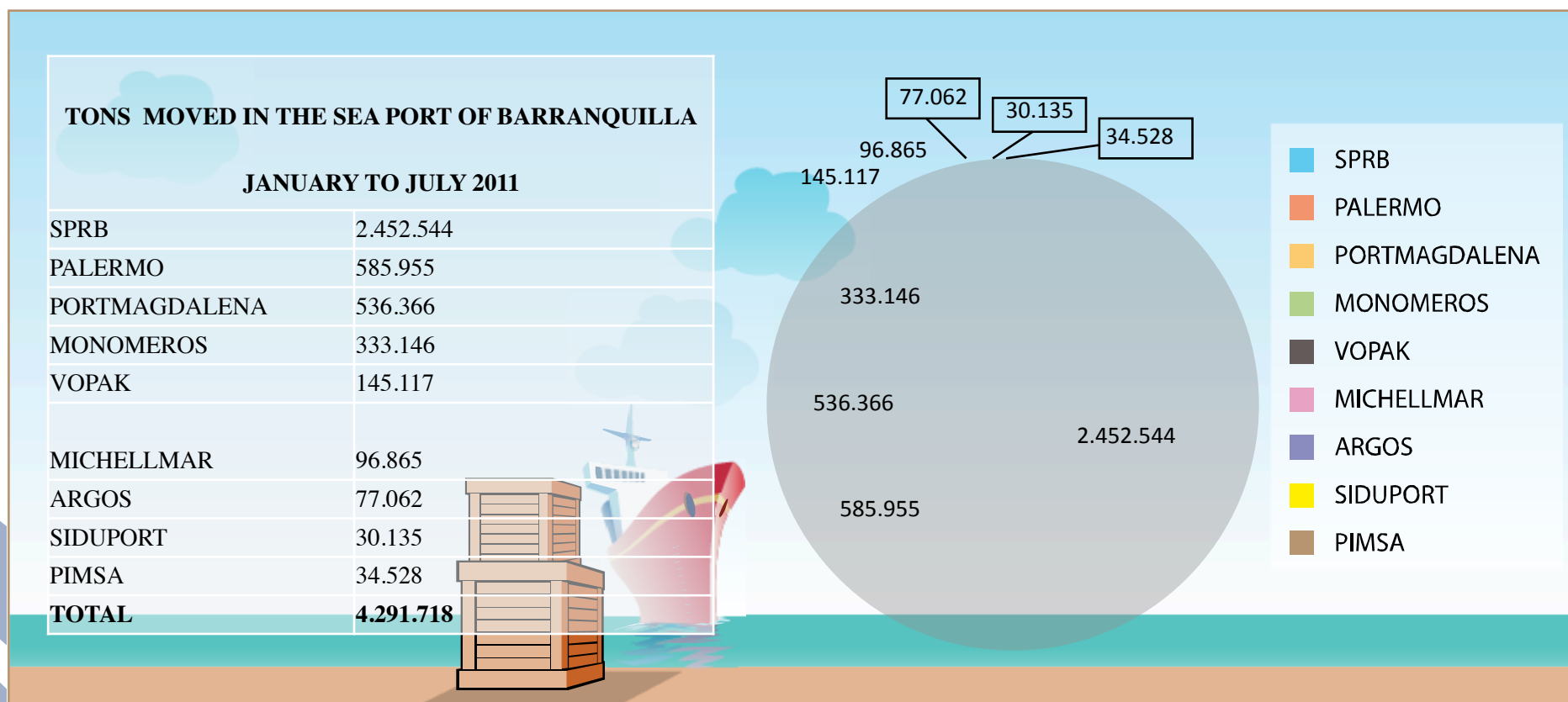


Study made by Sismar (System of sea transport information) of Quintero Brothers.

Movement of *cargo in the port zone*



First Semester 2011



Services of the *terminals*



Sociedad Portuaria del Norte



TYPE OF CARGO: Multipurpose

Our project must be developed in the first half of 2012. Right now, the BCT project (Barranquilla Container Terminal) is in "Greenfield" period, this will allow the port of Barranquilla to have a terminal only for containers with 3 gantry cranes low-profile type and 2 RTG Cranes (Rubber Tyred Gantry) +6 (it means 6 containers piled up and one in maneuvers).

This project is one of the most innovative developments in port matters in Barranquilla, since it means the set in motion of the first terminal 100% dedicated to containers that the city and the port would have in history. Concerning the SPN we are in the stage of solving the accident. Subsequently, once the legal matter is settled, the reconstruction of the terminal will proceed.

Lineal meters of concession: 400 meters

Cargo movement in 2010: 321.659 t

INVESTMENT PLAN from 2011 to 2016: USD\$ 42 Million

Cementos Argos S.A.



TYPE OF CARGO: solid goods for importation and exportation and palletized cargo

Sea Port Society Argos Cement inc. Exit door for the exportation of the group intended to its associate companies and to third parties in general. Its concession is valid until March 2029. The areas of operations have an extension of four hectares; the infrastructure handles up to 800 tons per hour of the stacks

characteristic in the activity of cement.

Lineal meters of concession: 800 meters of concession shore.

Specific needs: Access canal to 40 feet.

Cargo movement in 2010: 212.000 t

Cargo projection for 2011: 350.000 t

PLAN OF INVESTMENT from 2011 to 2016: USD\$ 925.000





Palermo Sociedad Portuaria S.A.



TYPE OF CARGO: Multipurpose

Terminal Palermo Sociedad Portuaria belongs to a holding of companies led by the Coremar group, which counts on the capital of private investors, offering with their own infrastructure a complete service of logistic lines for profit aims. In this moment Palermo classes itself as a company of the tertiary sector because they offer services of maritime character, logistic and port facility to the different companies participating in Colombian foreign trade, offering to the industry the use of their installations, equipment, human talent and other infrastructure for the right treatment and distribution of the cargo. The construction of the first stage of the port started in the year 2007. During their first year of operations Palermo Sociedad Portuaria handled more than 300.000 tons among general cargo, stacks and containers. Thanks to their upcoming projects, Palermo is classed today as one of the zones with more projection on the level of industrial development and foreign trade in Colombia.

Lineal meters of concession: 1.050 m (750 for solids and 300 for liquids).

Movement of cargo in 2010: 839.329 t

Projection of cargo in 2011: 1.200.000 t

PLAN OF INVESTMENT 2011 / 2016: USD\$ 150 Million.



Sociedad Portuaria Monómeros Colombo-Venezolanos S.A.



TYPE OF CARGO: chemical inputs.

Sociedad Portuaria Monómeros Colombo Venezolanos S.A: Mixed company dedicated to the production of composed fertilizers for the industry and agricultural sector of Colombia. 90% of the movements on its private dock corresponds to operations of raw material and other inputs for production. It has ports in Barranquilla and Buenaventura.





Pizano S.A.



PIZANO SA

TYPE OF CARGO: Fragments of Wood.

Sociedad Portuaria La Loma Pizano S.A: Main producer of wooden boards in South America and the Andean Region.

They are located strategically and that makes easier the access to the main maritime ports of the Caribbean, Center and North America.

Movement of cargo in 2010: 92.000 t

Projection of cargo for 2011: 100.000 t



Puerto Pimsa S.A.



TYPE OF CARGO: General

Public sector port located 38 kilometers away from the Caribbean Sea, on the west bank of the Magdalena river mouth , which makes easier the handling of cargoes for exportation, importation, and storage of merchandise, cabotage, solid stacks and general cargo like steel. Access for Motor Vessels with global positioning system (G.P.S) and navigator (Hypack) guarantees a safe and reliable access. Certified port with security standards by the BASC (Business Alliance for Secure Commerce) and under the international norms for protection of vessels and port facilities installations code P.I.B.P (I.S.P.S), Certified by the Maritime International Organization (O.M.I: Organización Marina Internacional) and the DIMAR of Colombia (decree 031 of August 4, 2004) demands the ISPS code for every motor vessel that arrives to the port. It has the corresponding authorizations issued by the DIAN, CORMAGDALENA and the Ministry of Environment.

Lineal meters of concession: 372 meters

Cargo movement: General cargo: 65.000 t – Solid Bulk: 45.000 t

Total load: 2011: 110.000 t

INVESTMENT PLAN 2011 to 2016: USD\$4 Million



PortMagdalena S.A.



TYPE OF CARGO: Liquid bulk

Fluvial and maritime port specialized in the handling of cargo of liquid bulk, chemical products among them and white products obtained from petroleum. ***Is the only maritime and fluvial port specialized in liquid bulk.***

Portmagdalena has as its objective to offer port services to the users of the ZFB (resolution 24130, July 2009, Cormagdalena).

It has a storage capacity of 600.000 barrels, turning it into an excellent platform of foreign trade for agrochemicals, fuels, biofuels and chemicals.

Lineal meters of concession: 891 meters.

Cargo movement: Liquid bulk: 182.979.

Load projection on 2011: Liquid bulk: 800.000 t

INVESTMENT PLAN 2011 to 2016: USD\$ 11 Million.



Sociedad Portuaria Atlantic Coal de Colombia S.A.

TYPE OF CARGO: Coal

SOCIEDAD PORTUARIA ATLANTIC COAL DE COLOMBIA S.A ., is a concession mainly for coal exportation.

It is a transatlantic group focused on the processing of anthracite coal which has a greater level of carbon even of 95%.



Michellmar S.A.



We are an institution dedicated to offer integral sea port services, certified for loading and unloading of merchandises of national and international traffic, conformed by a qualified human team and committed to the excellence in our objectives, achieving the satisfaction of our clients and our working personnel, contributing with it to improving the life quality of the community, stimulating the development of our nation in great measure.

Lineal meters of concession: 369 m (riverside)

Cargo Movement: 183.924,57 t

Cargo projection 2011: General Cargo: 350.000 t

INVESTMENT PLAN 2011 to 2016: USD\$14.500.000



Sociedad Portuaria Terminal de Mallorquín S.A.



TYPE OF CARGO: Coal

Masering is a mining company with more than forty years dedicated to the exploration and commercialization of coal and other minerals. Due to the importance of logistics and resources in the mining industry, Masering started the development of its 3 port concessions granted by the Colombian government. In order to develop this we are working with internationally renown and very experienced engineering companies in the matters of design and port engineering.

Two of these terminals are located in Barranquilla, with fluvial and maritime access in a total area of 750,000 m2. The other terminal is 580 k to the south of Barranquilla, on the Magdalena River (Colombia's main river). This port is strategically located very near some of the mining developments of Masering, and also close to other important industrial centers.

Lineal meters of concession: 1.300 meters.

INVESTMENT PLAN until 2016: USD\$25 million





Sociedad Portuaria del Caribe S.A.

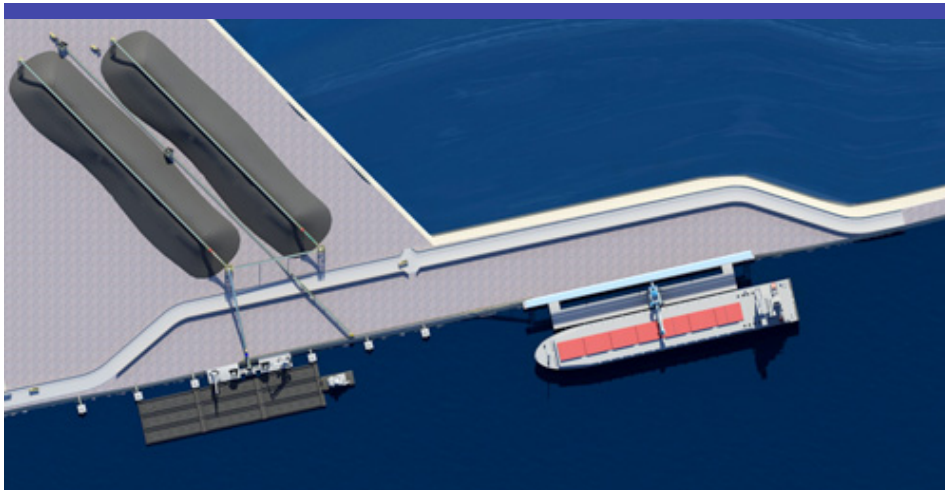


TYPE OF CARGO: Coal, solid bulk, other bulk.

SPDC possesses an strategic localization which allows the efficient integration of the new areas of carboniferous development located in the center and eastern regions of Colombia, using the Magdalena River as a means of transportation through which great volumes of cargo may be mobilized with costs lower than the current ones, taking advantage of implementing a multimodal system of transportation

Lineal meters of concession: 1.600 meters

INVESTMENT PLAN 2011 to 2016: USD\$40 Million.



Vopak S.A.



TYPE OF CARGO: Liquid bulk.

Vopak Colombia S.A: This terminal has an area of 17.830 m. It specializes in liquid bulk as chemicals, vegetable oils and products of petroleum, it possesses a depth of 36 feet and a dock length of 175 m.

Vopak Colombia S.A; with its terminals in Barranquilla and Cartagena and its 56.160 m³ offers its clients more than capacity of storage for importation and exportation, and the professionalism of a team committed to offering excellent services to contribute to the success of your businesses.





Sociedad Portuaria Siduport S.A.



SIDUPORT S.A.

TYPE OF CARGO: Solid and steel.

Terminal under construction by the Sredni Organization. It operates with general cargo. It is a cabotage port, which means it is for commercial traffic.

Lineal meters of concession: 923 meters / area: 51.782,30 m²

Specific needs: Security on the river and proper maintenance of the canal.

Cargo movement: 87.793,258 t

Cargo projection 2011: 140.899 t of steel.

INVESTMENT PLAN 2011 to 2016: USD\$ 2.800.000



Sociedad Portuaria Bocas de Ceniza S.A.

TYPE OF CARGO: Multipurpose.

Public corporation, promoter and implementing agent of the project of construction of the port of deep waters in the area of Bocas de Ceniza.

Lineal meters of concession: 815 hectares of beaches, low tide ground and accessory zones to these grounds or those located near the west cutwater.

Specific needs: Construction of an access passageway to the zone of the Ciénaga (swamp) de (of) Mallorquin.

INVESTMENT PLAN 2011 to 2016: USD\$ 250 Million



Muelles Aquamar

TYPE OF CARGO: Multipurpose.

Port in construction on the Magdalena River.

Project in construction.



Sociedad Portuaria Sodintec



TYPE OF CARGO: General, solid and liquid bulk, containers of coke coal

Sodintec S.A., was established in the year 2004 with the goal of developing the Project of a multipurpose port intended to offer public services of general cargo, bulks, solids and liquids.

The investments will increase from the year 2012 with a proportional estimated value of USD\$ 2.395.381 per year.

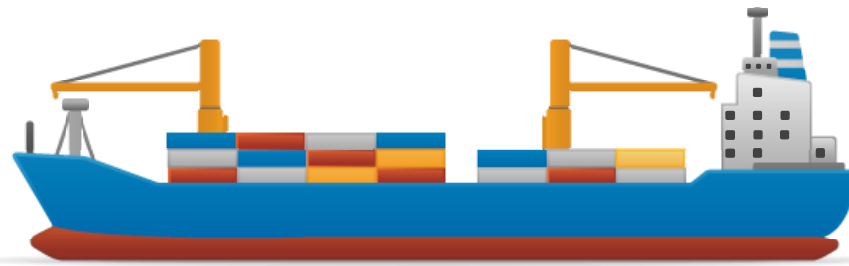
INVESTMENT PLAN 2011 to 2016: USD\$ 9.581.524



Total investment: 2011 to 2016 *Sea Port Zone*



USD \$ 549.806.524

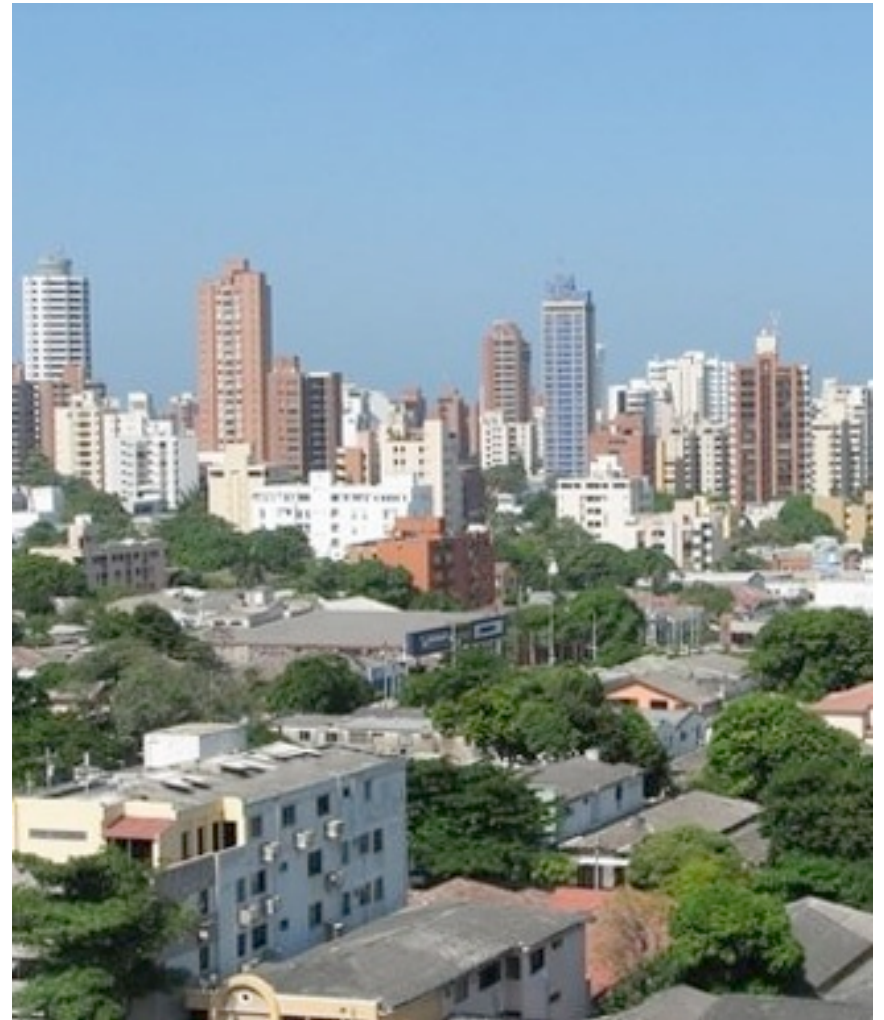


ASOPORTUARIA


BARRANQUILLA
ZONA**PORTUARIA**

Commercial *management*

From the beginning, Asoportuaria worked for the improvement of the conditions of navigability of the Barranquilla Port, and that pledge has been improved with the introduction of different fronts of work that have contributed to achieving this goal, because there are two agreements with public and private entities that were reached through the initiative, leadership and negotiations of Asoportuaria.



Signing of *agreements*



CORMAGDALENA – UNINORTE



Value: \$ 456.743.886

Objective: To design a plan to deal with problems of depth in the Access canal to the port of Barranquilla and with simulations of navigation.

GOVERNMENT– MOFFATT & NICHOLL



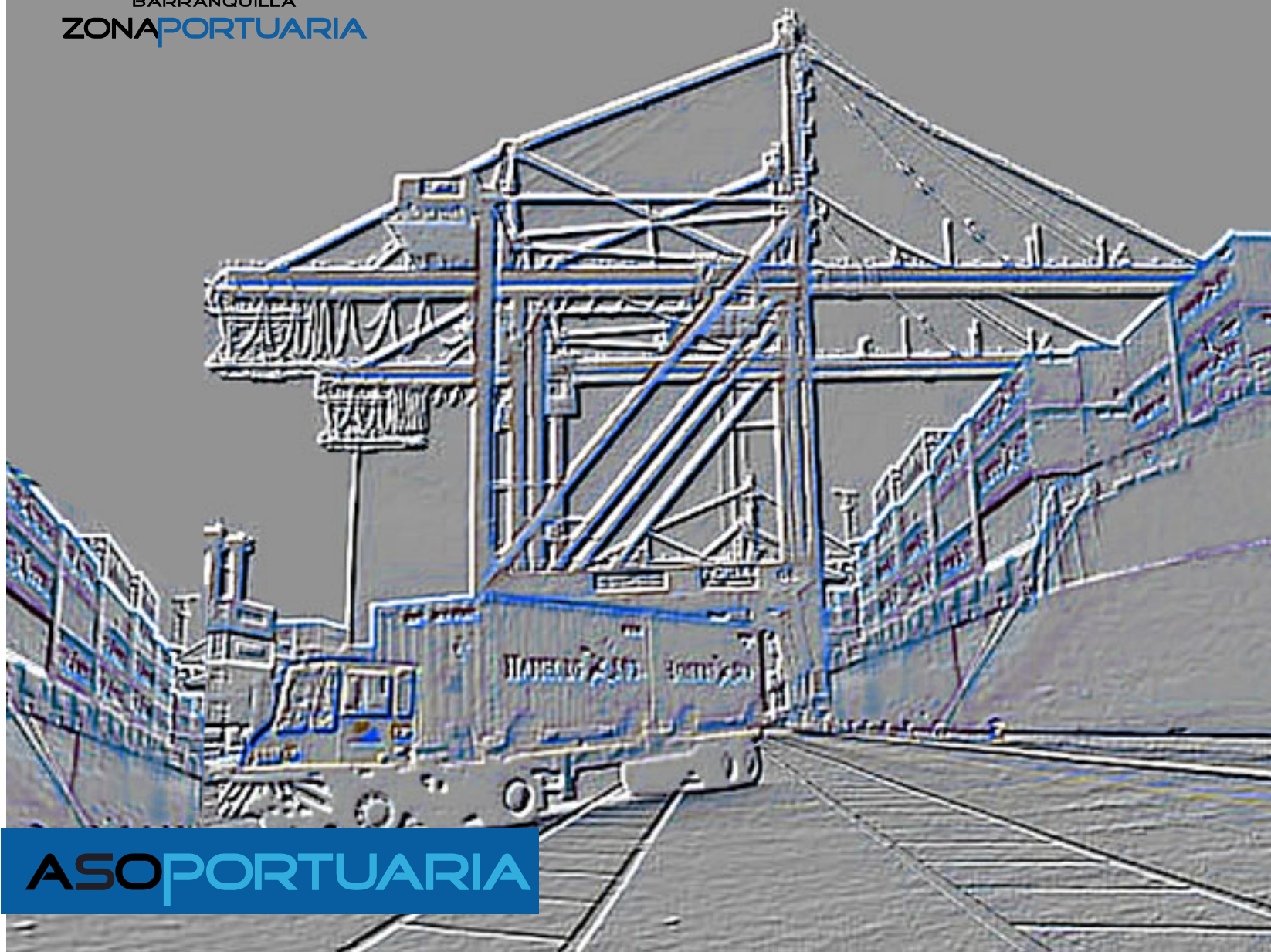
Value: \$ 140.000.000

Objective: To rebuild the dock of Puerto Colombia, which consists of pathological, structural studies of the dock, with the purpose of establishing its bearing capacity and determining the possible solutions for its restoration, which will allow it to recover the tourism in accordance with the PEMP.



BARRANQUILLA
ZONA PORTUARIA

Expansion to the *future*



ASO PORTUARIA

Master plan for *development*

The proposal made by the firm RMG Consult BV of Rotterdam, Holland, was received, consisting of elaborating the Master Plan of the Port of Barranquilla (PMP) to achieve the development of the port as a regional center for commerce and logistics and evaluate its indicators with the international standards.

The proposal has already been evaluated by the Chamber of Commerce of Barranquilla, the government of the Atlantico department, the Mayor's office of Barranquilla, Cormagdalena, Regional Sea Port Society of Barranquilla and Asoportuaria.



Ramsar Zone

Asoportuaria in delegation of the ports of the *Atlántico*, took action to request the Ministry of Environment, Housing and Territorial Development the exclusion as Ramsar Zone, within the normative frame of the decree 3888 of 2009, of the areas corresponding to the West Cutwater of the Magdalena River and the *Ciénaga de Mallorquín*, located in the district of *Barranquilla* and great part of the river banks of the Magdalena River in the department of the *Atlántico*, having in mind that this areas have already been authorized for port areas for general cargo, containers, solid bulks for exportation of coal and hydrocarbon among others, respecting the public policy in matters of sustainable development aiming to favor the economic development of the port sector and therefore of the nation.



Projection to the *future*

- To lead the processes structured to sustain the navigability on the Magdalena River.
- To increase the number of partners of ASOPORTUARIA achieving the unity of the sector.
- To conduct the first ASOPORTUARIA academic forum.
- To launch and position the corporate identity.
- To watch over the maintenance of the navigable canal in order to allow our associates to boost their levels of competitiveness.





BARRANQUILLA
ZONA PORTUARIA

Press notes

PERIÓDICOS

ASO PORTUARIA

News

Today, after the troubles with ships running aground and painstaking action taken by the authorities, associates, Asoportuaria and the government, it has been defined through Invías and Cormagdalena, to allocate resources to the value of 11.000 million pesos to the dredging of the navigable sector: 10.500 million for the dredging of the navigable canal and 2.500 for studies and research.

ASOPORTUARIA



Evident urgency for dredging in the port of Barranquilla



Juan Manuel Santos, President of Colombia.

Port authorities and investment in dredging urged

Dredging immediately the access canal to the port, as well as creating a Port Authority would be a good solution to the problems happening today in the port of Barranquilla and, in the long-term period, the construction of a port of deep waters.



Foto: José Torres

Photo picturing the meeting with businessmen and port companies that took place in “El Heraldo” (The Herald, a local newspaper)



Structured Project to build a new Pumarejo Bridge.

The announcement was made by the director of Invías, Carlos Rosado Zúñiga, before the board of directors of the Colombian Chamber of Infrastructure, during a session today in Barranquilla.

Thank you very much.





BARRANQUILLA
ZONA PORTUARIA

ASO PORTUARIA

Thank you